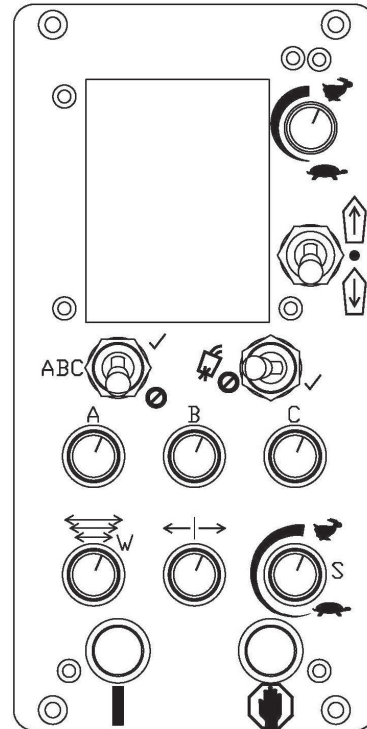


**INNOVATIVE ONE CONTROL DESIGN**

The KAT@300 Pipe Welding Carriage comes standard with the industry innovating GK-207 series control. This highly sophisticated, yet easy to use control combines both the carriage control and the high resolution oscillator control into one control interface. This new control design allows for the programming and adjustment of key pipe welding parameters to be adjusted and displayed on the LCD display, making in operation use of the control simpler and more visible for the operator.

**CONTROL FEATURES:**

- Automatic arc activation signal Enable or Disable
- High visibility LCD screen
- Forward, Stop, Reverse toggle switch
- Carriage speed adjustment knob and display
- Weld direction indicator icon
- Emergency stop button
- Stores up to 10 automatic cycle programs
- Oscillation stroke speed control
- Oscillation width adjustment
- Oscillation dwell Enable/Disable (Left, Center & Right Dwells)
- Oscillation dwell time adjustment (0-5s)
- Oscillation centerline adjustment



**PARTNUMBERCONFIGURATION**

Select a option and voltage to configure a KAT@ specifically suited to your needs

GK-  -300-2

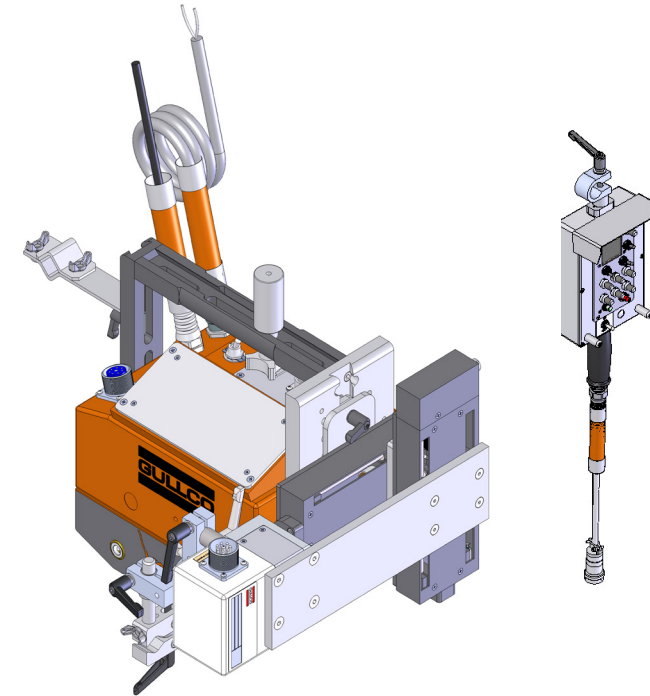
MODEL OPTIONS	
MODEL	DESCRIPTION
PWL	Linear Oscillation Head
PWR	Radial Oscillation Head



**KAT® 300 PIPE WELDING AUTOMATION CARRIAGE**

The 300 Series KAT® Pipe Welding Automation Carriage is used throughout the world to automate pipe girth weld applications. The KAT® is small and light yet robust with many features which include:

- Tool-less Setup, Adjustment & Operation
- Self-aligning Wheels (Easy Installation)
- Remote Control of Key Parameters and Torch Positioning
- Dynamic Dovetail Racking for versatile torch positioning
- OSHA Safety Orange
- Ingress Protection (Sealed Unit) including Conformal Coated Circuit Boards
- Energy Efficient
- Universal Compatibility to all welding power sources and wire feeders
- Torch holder memory for fast torch removal and accurate repositioning after cleaning
- Compatible with all existing rigid track and the new semi rigid track sections



**THE MOST DURABLE, DYNAMIC, AND VERSATILE CARRIAGE IN THE INDUSTRY**

GULLCO, KAT, KBM, MOGGY, KATBAK & SAM are registered trademarks of Gullco Enterprises Limited

Distributed by:

SPECIFICATIONS ARE SUBJECT TO CHANGE WITHOUT NOTICE. ALL DIMENSIONS ARE NOMINAL

**GULLCO**

**CANADA - GULLCO INTERNATIONAL LIMITED**  
Phone: 1-905-953-4140 Fax: 1-905-953-4138 e-mail: sales@gullco.com

**U.S.A - GULLCO INTERNATIONAL INC.**  
Phone: 1-440-439-8333 Fax: 1-234 808-4146 e-mail: ussales@gullco.com

**EUROPE - GULLCO INTERNATIONAL (U.K.) LIMITED**  
Phone: +44 1257-253579 Fax: +44 1257-254629 e-mail: uksales@gullco.com

**AUSTRALIA - GULLCO INTERNATIONAL PTY LIMITED**  
Phone: 61 (0)7 3348 5515 Fax: 61 (0)7 3348 5510 e-mail: ausales@gullco.com

**INDIA - GULLCO INTERNATIONAL INDIA PVT LIMITED**  
Phone: +91-20-2551-1433 Fax: +91-20-2551-1433 e-mail: indsales@gullco.com

**CHINA - GULLCO INTERNATIONAL SHANGHAI LIMITED**  
Phone: +8621-50460341 Fax: +8621-50463554 e-mail: c.zhang@gullco.com

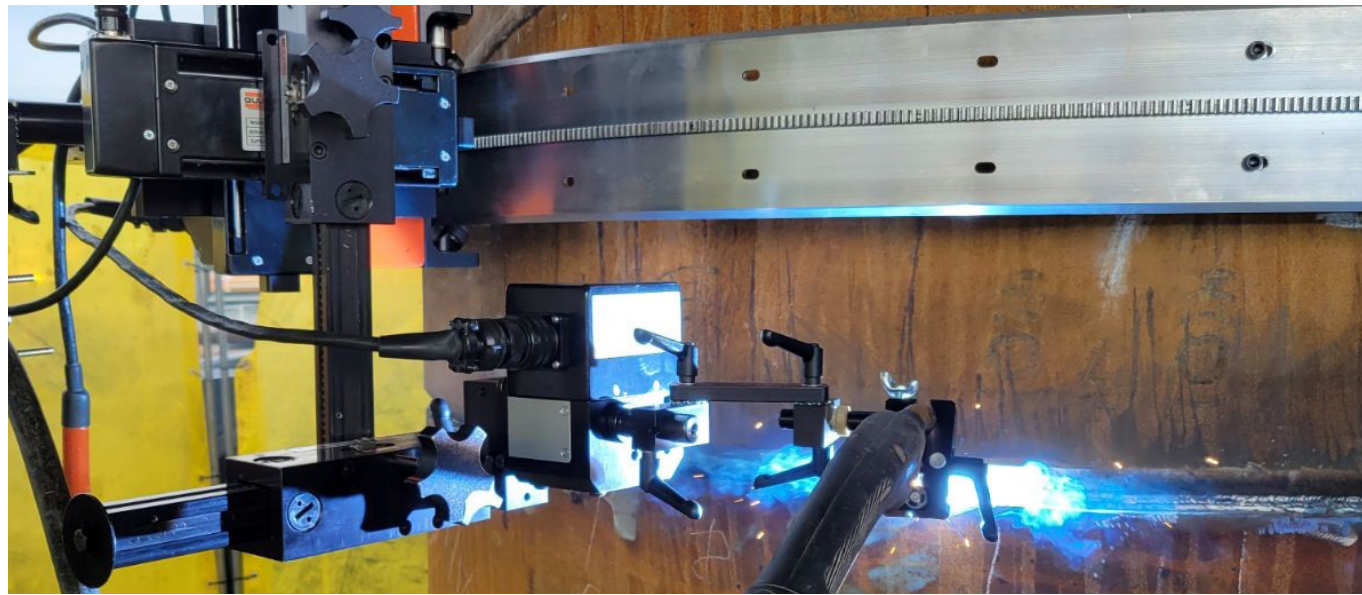
**SINGAPORE - GULLCO INTERNATIONAL LIMITED**  
Phone: +65-9385-4468 e-mail: benny.lim@gullco.com

**LATIN AMERICA - GULLCO INTERNATIONAL LIMITED**  
Phone: 55-11-99485-1336 e-mail: rogerio.macedo@gullco.com

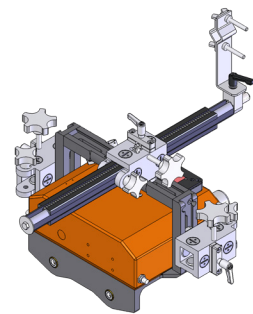
**GERMANY - ms gmbh Melchior Schweißtechnik**  
Phone: +49(0)173 5437722 Fax: +49(0)208 999 38-38 e-mail: christian.mertens@ms-gmbh.com



**AUTOMATED PIPE GIRTH WELDING SYSTEM - KAT®300-PW**

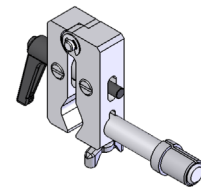


**FEATURE RICH ENGINEERED DESIGN**



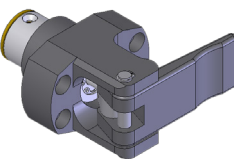
**DYNAMIC RACKING**

Using a machined dovetail racking system and locking rack box, torch positioning is versatile and adjustable. The rack box can be positioned anywhere along the racking and torch removal and adjustment is simple.



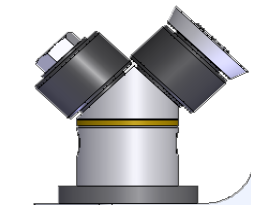
**TORCHHOLDER MEMORY**

The torch holder has been designed for quick and easy removal of the torch so that cleaning and accurate repositioning of the welding torch in the optimal position is simple and consistent.



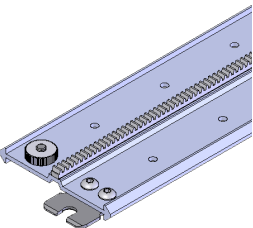
**PADDLELOCKS**

Quick installation paddle locks provide smooth transition of the self-aligning wheels onto the track.



**SELF-ALIGNING WHEELS**

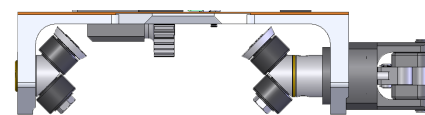
Self-aligning wheels means the carriage is mounted to the track correctly and easily every time. This ensures smooth carriage motion and maximizes the life of the track.



**SEMI RIGID TRACK**

Semi rigid track is made from precision extruded aluminum and a securely affixed steel rack. The interchangeable end design enables fast accurate joining of the track sections and provides smooth movement of the carriage along the track in both flat and curved surfaces. Flexibility to a minimum diameter of 24ft (7315.2mm) internal or external.

**MACHINED UNDERCARRIAGE**

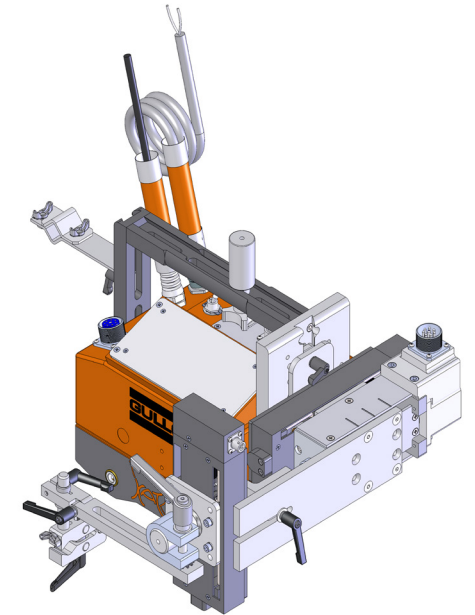


Lightweight design engineered for optimal setup times utilizing the self-aligning wheels and paddle lock technology.

**GK-PWL-300 KAT® 300 Pipe Welding Carriage with Linear Welding Oscillation Head**

Carriage Speed 1 - 32.7 IPM (2.5 - 83.1 cm/min)  
Heavy duty quick action self-aligning wheels combined with two track mounting paddled locks. Accurate Carriage speed control by conformal coated ingress protected 24 volt Gullco microprocessor.

Maximum load capacity 56 lb (25.4 kg) regardless of weld position. With forward/stop/reverse switch, high speed return, infinitely variable multi-turn speed potentiometer and LED display. Oscillator control provides Auto Arc Start, independent dwell at each end and center of the 1.5" stroke, infinitely variable 0 to 5 seconds; oscillation speed potentiometer, speed range 8 to 188 cycles per minute (16 to 376 passes per minute). Weld oscillator head mounted on infinitely variable dovetailed tool-less racking system.



**GK-PWR-300 KAT® 300 Pipe Welding Carriage with Radial Welding Oscillation Head**

Carriage Speed 1 - 32.7 IPM (2.5 - 83.1 cm/min)  
Heavy duty quick action self-aligning wheels combined with two track mounting paddled locks. Accurate Carriage speed control by conformal coated ingress protected 24 volt Gullco microprocessor.

Maximum load capacity 56 lb (25.4 kg) regardless of weld position. With forward/stop/reverse switch, high speed return, infinitely variable multi-turn speed potentiometer and LED display. Oscillator control provides Auto Arc Start, independent dwell at each end and center of the 0.8 - 45° oscillation width stroke, infinitely variable 0 to 5 seconds; oscillation speed potentiometer, speed range 1° - 45° per second. Weld oscillator head mounted on infinitely variable dovetailed tool-less racking system.

